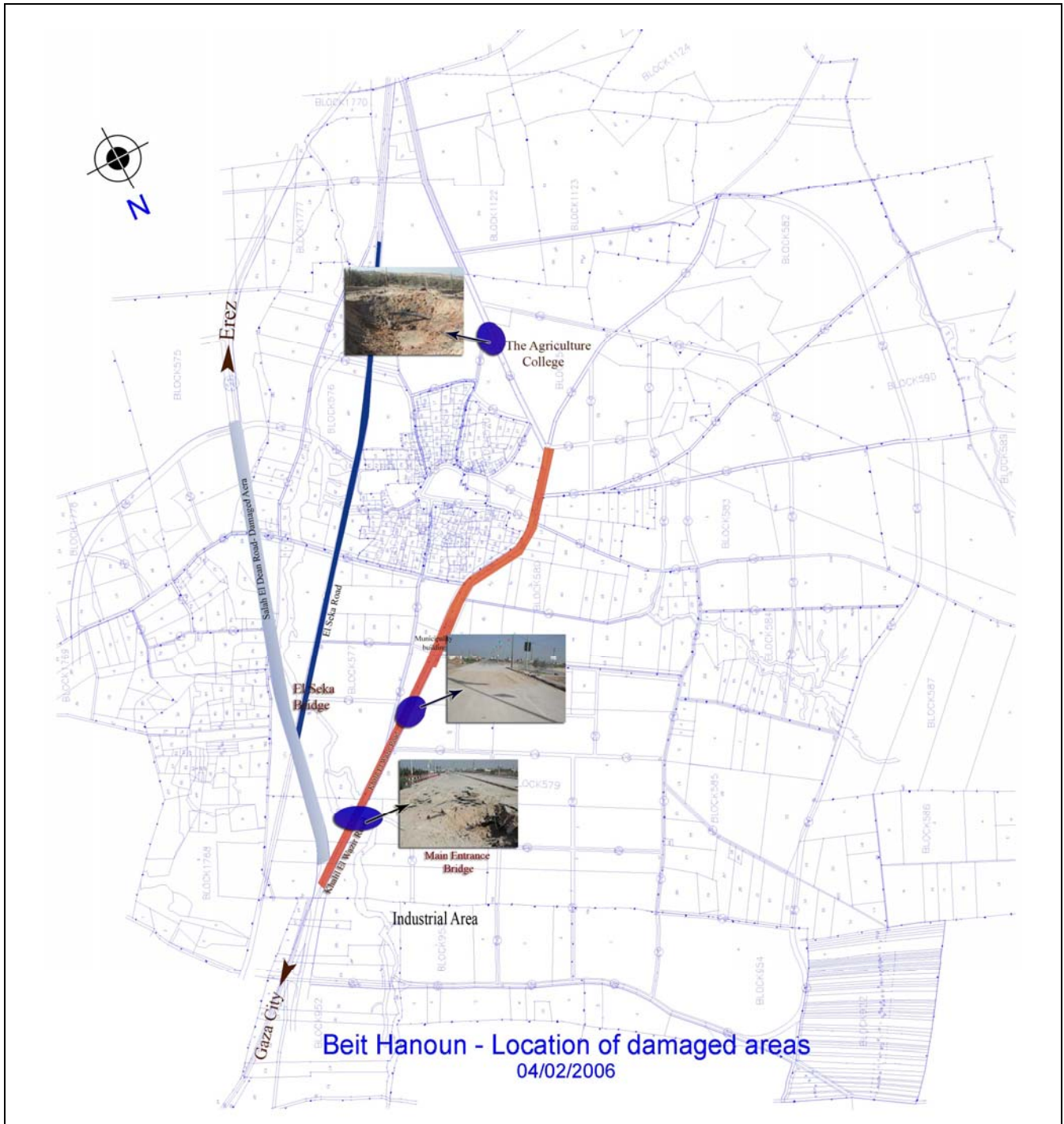




**Damage Assessment: Beit Hanoun Area-04/02/2006**



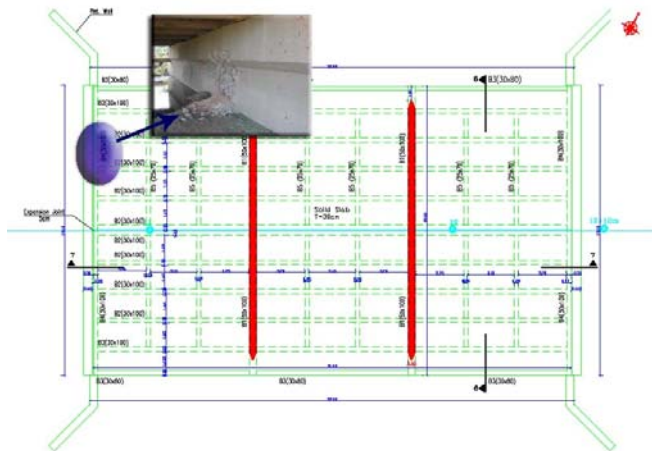


**The Main Entrance Bridge to Beit Hanoun(Funded by EC)**

**Date 05/02/2006**



View towards Beit Hanoun  
Two deep holes, damages in the western wing (concrete wall)



**location of damage**



**The Main Entrance Bridge to Beit Hanoun**  
**Date of damage 04/02/2006**





**The Main Entrance Bridge to Beit Hanoun**  
**Date of damage 04/02/2006**





**Al Zeraa Street- (Agriculture College street)  
Date of damage 04/02/2006**



Big hole in the road, damages to curbstone,  
base course and water pipes (Main line)



**Khalil El Wazir Road**  
**Date of damage 04/02/2006**



View to Beit Hanoun  
Big hole in the road- the hole had been filled up by kurkar