

# Estimated Cost per Sector (I)

# JENIN GOVERNORATE

March 2006

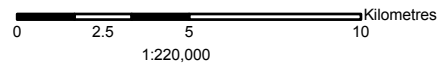
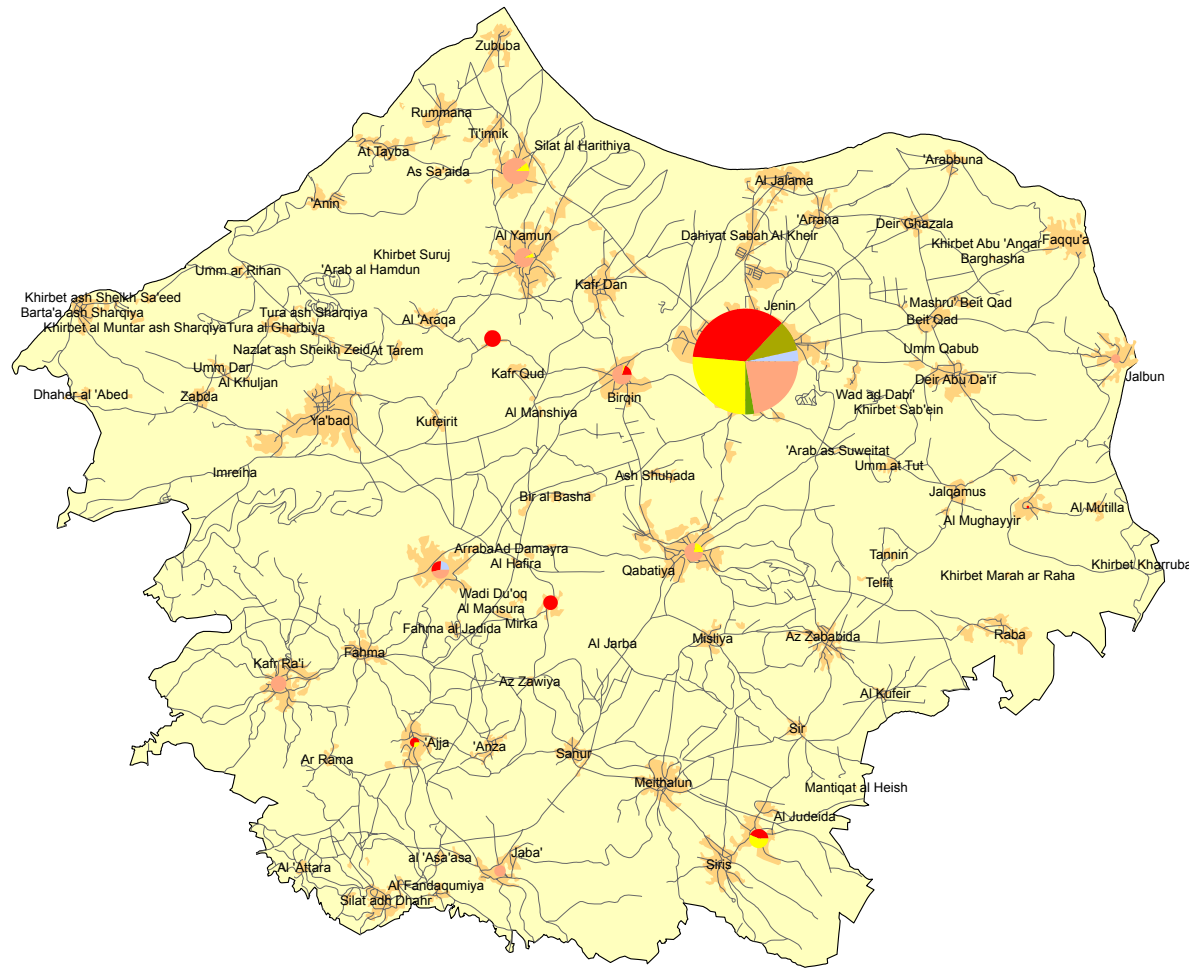
160,000 170,000 180,000 190,000



210,000

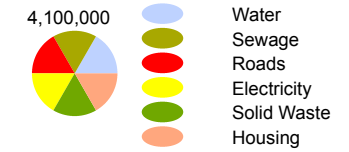
200,000

190,000



## Estimated Cost per Sector (US\$) (Type I)

- Governorate Borders
- Built Areas
- Jenin Camp
- Roads



- Type I Projects resulting from damages directly caused by Israeli Forces
- Type II Projects NOT directly resulting from Israeli Forces caused damages (Rehabilitation and reconstruction (infrastructure), repair and replacement (equipment), new projects)

Base Data: PA MoPIC, July 2000  
 Cartography: IMG - Updated March 2006  
<http://www.ecwb.gov.info/>



DA/1/SECTOR/TI/01

160,000 170,000 180,000 190,000

