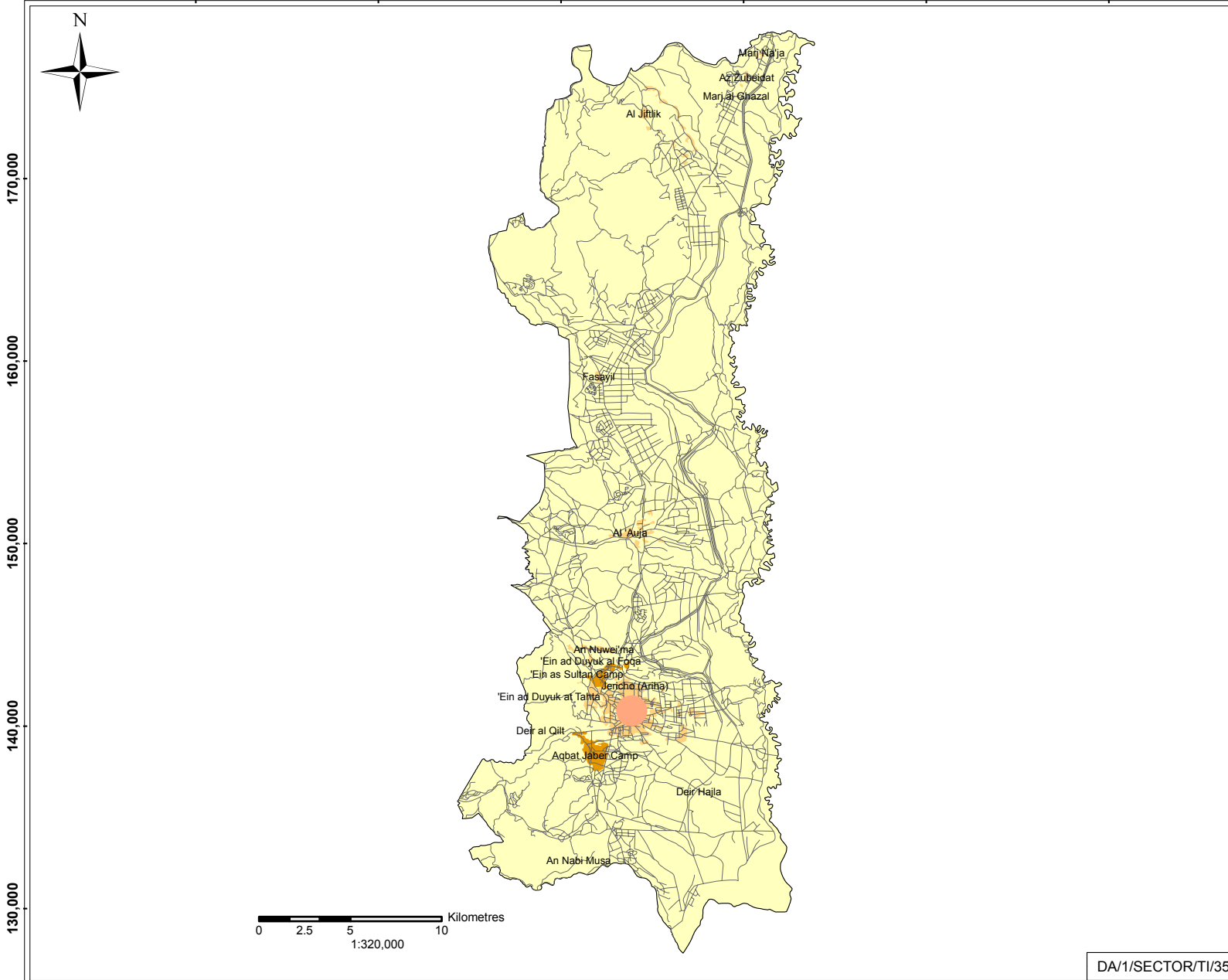


Estimated Cost per Sector (I)

JERICHO GOVERNORATE

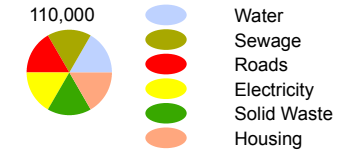
March 2006

170,000 180,000 190,000 200,000 210,000 220,000



Estimated Cost per Sector (US\$) (Type I)

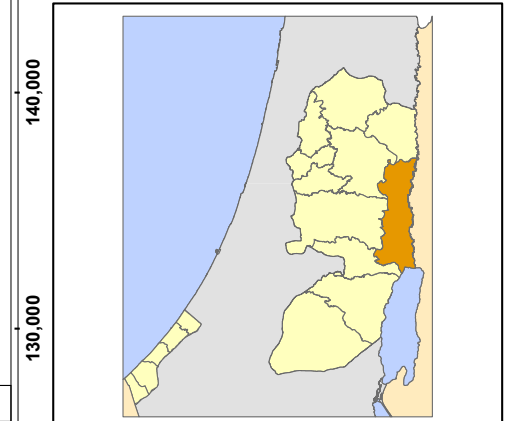
- Governorate Borders
- Built Areas
- Jericho_Camps
- Roads



170,000
160,000
150,000
140,000
130,000

- Type I Projects resulting from damages directly caused by Israeli Forces
- Type II Projects NOT directly resulting from Israeli Forces caused damages (Rehabilitation and reconstruction (infrastructure), repair and replacement (equipment), new projects)

Base Data: PA MoPIC, July 2000
Cartography: IMG - Updated March 2006
<http://www.ecwb.gov.info/>



170,000 180,000 190,000 200,000 210,000 220,000

DA/1/SECTOR/II/35

