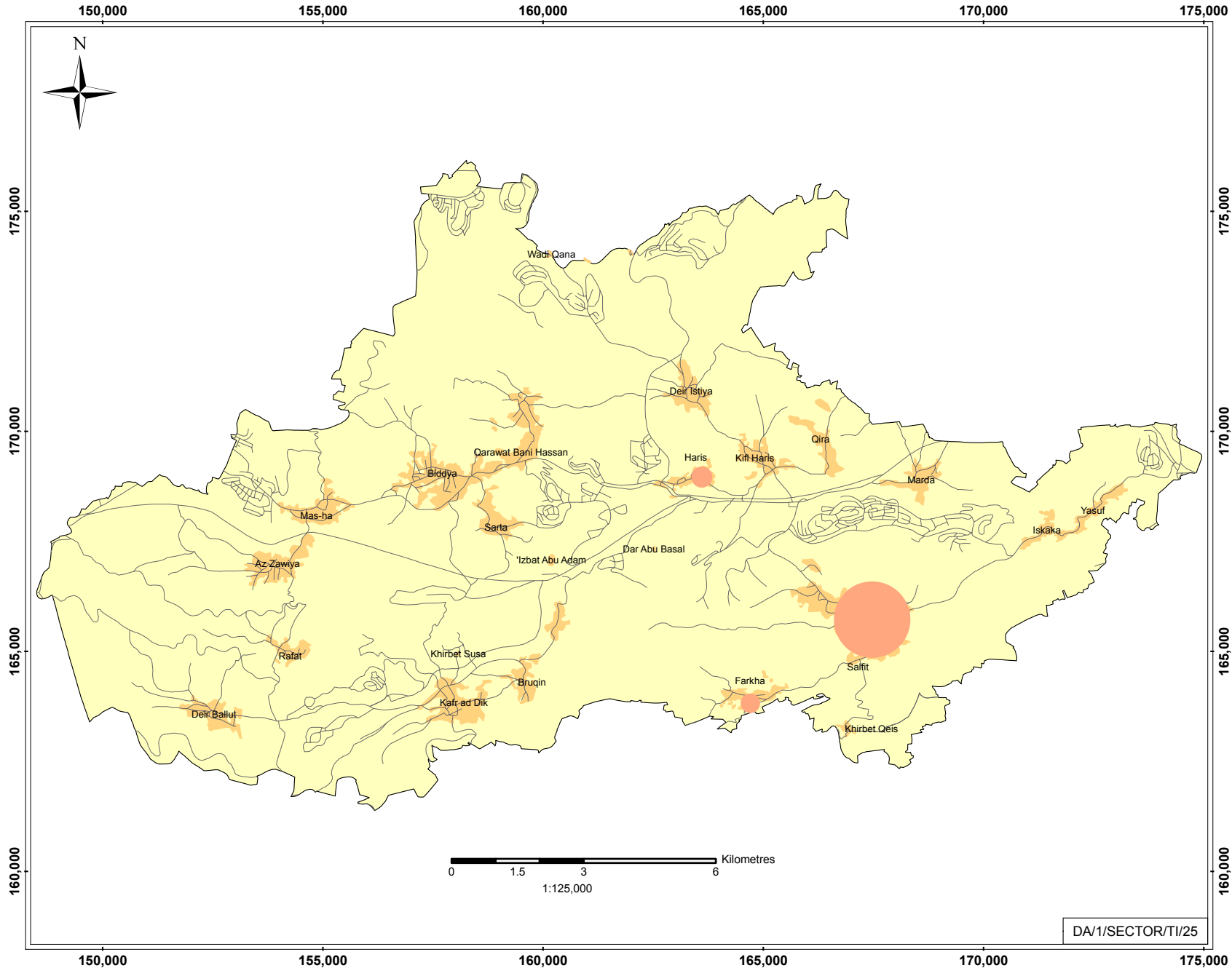


Estimated Cost per Sector (I)

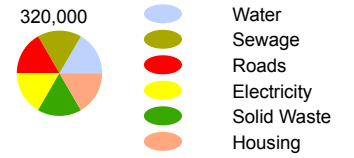
SALFIT GOVERNORATE

March 2006



Estimated Cost per Sector (US\$) (Type I)

- Governorate Borders
- Built Areas
- Roads



- Type I Projects resulting from damages directly caused by Israeli Forces
- Type II Projects NOT directly resulting from Israeli Forces caused damages (Rehabilitation and reconstruction (infrastructure), repair and replacement (equipment), new projects)

Base Data: PA MoPIC, July 2000
 Cartography: IMG - Updated March 2006
<http://www.ecwbg.info/>



DA/1/SECTOR/TI/25