

Estimated Cost per Sector (II)

JENIN GOVERNORATE

March 2006

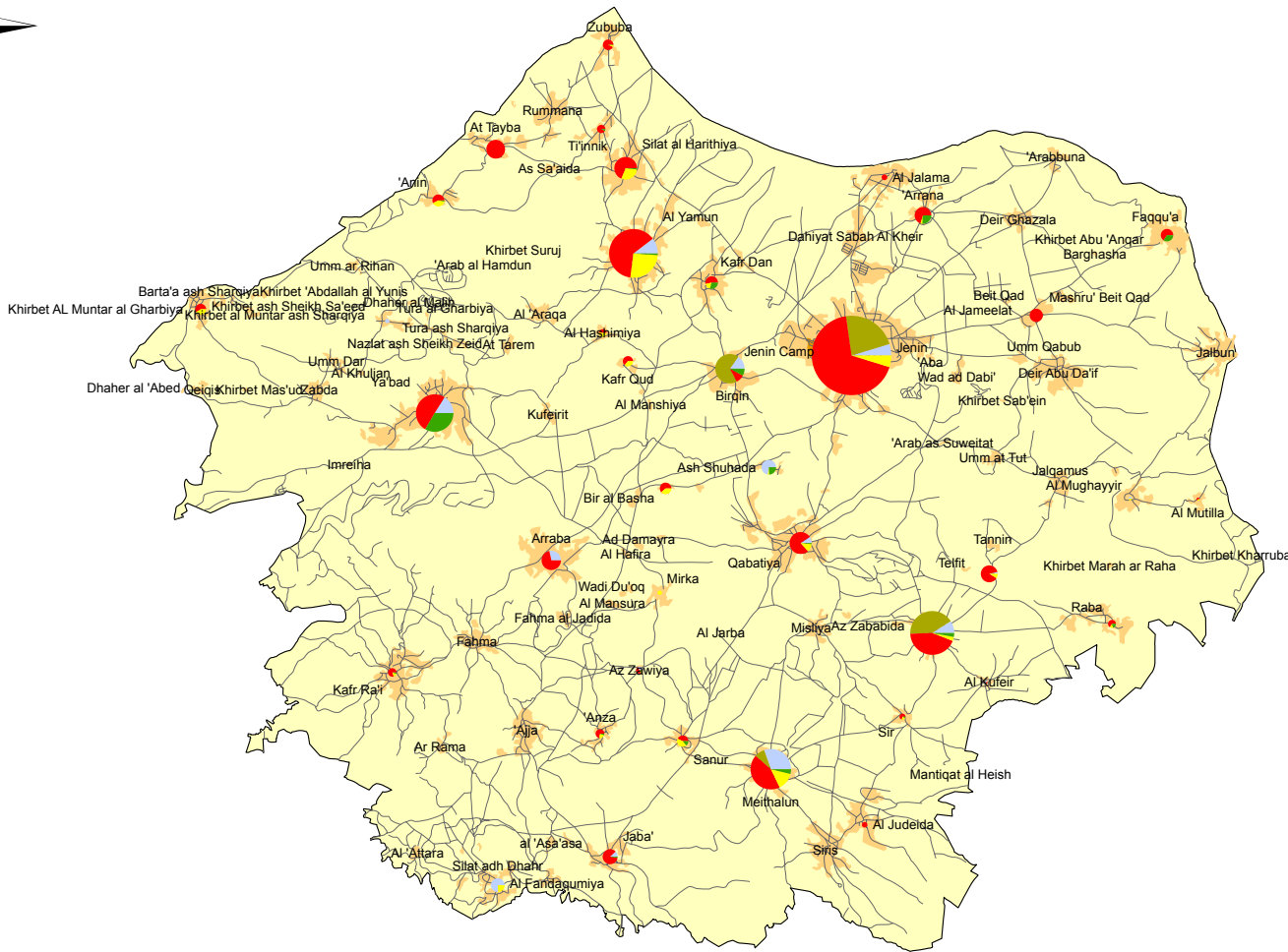
160,000 170,000 180,000 190,000



210,000

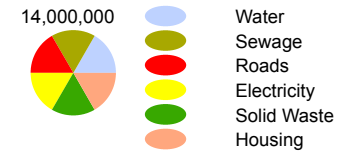
200,000

190,000



Estimated Cost per Sector (US\$) (Type II)

- Governorate Borders
- Built Areas
- Jenin Camp
- Roads



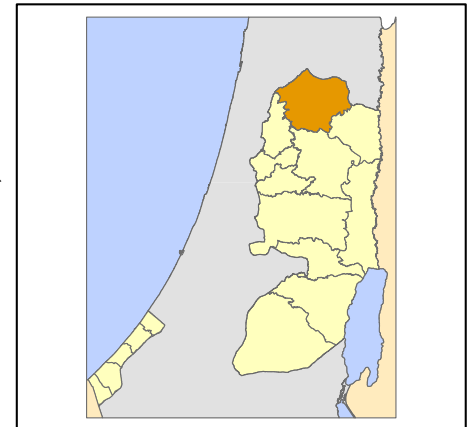
210,000

200,000

190,000

- Type I Projects resulting from damages directly caused by Israeli Forces
- Type II Projects NOT directly resulting from Israeli Forces caused damages (Rehabilitation and reconstruction (infrastructure), repair and replacement (equipment), new projects)

Base Data: PA MoPIC, July 2000
Cartography: IMG - Updated March 2006
<http://www.ecwbg.info/>



DA/1/SECTOR/TII/01

160,000 170,000 180,000 190,000

