

Estimated Cost per Sector (I+II)

JENIN GOVERNORATE

March 2006

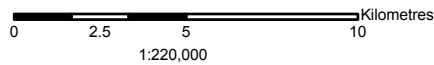
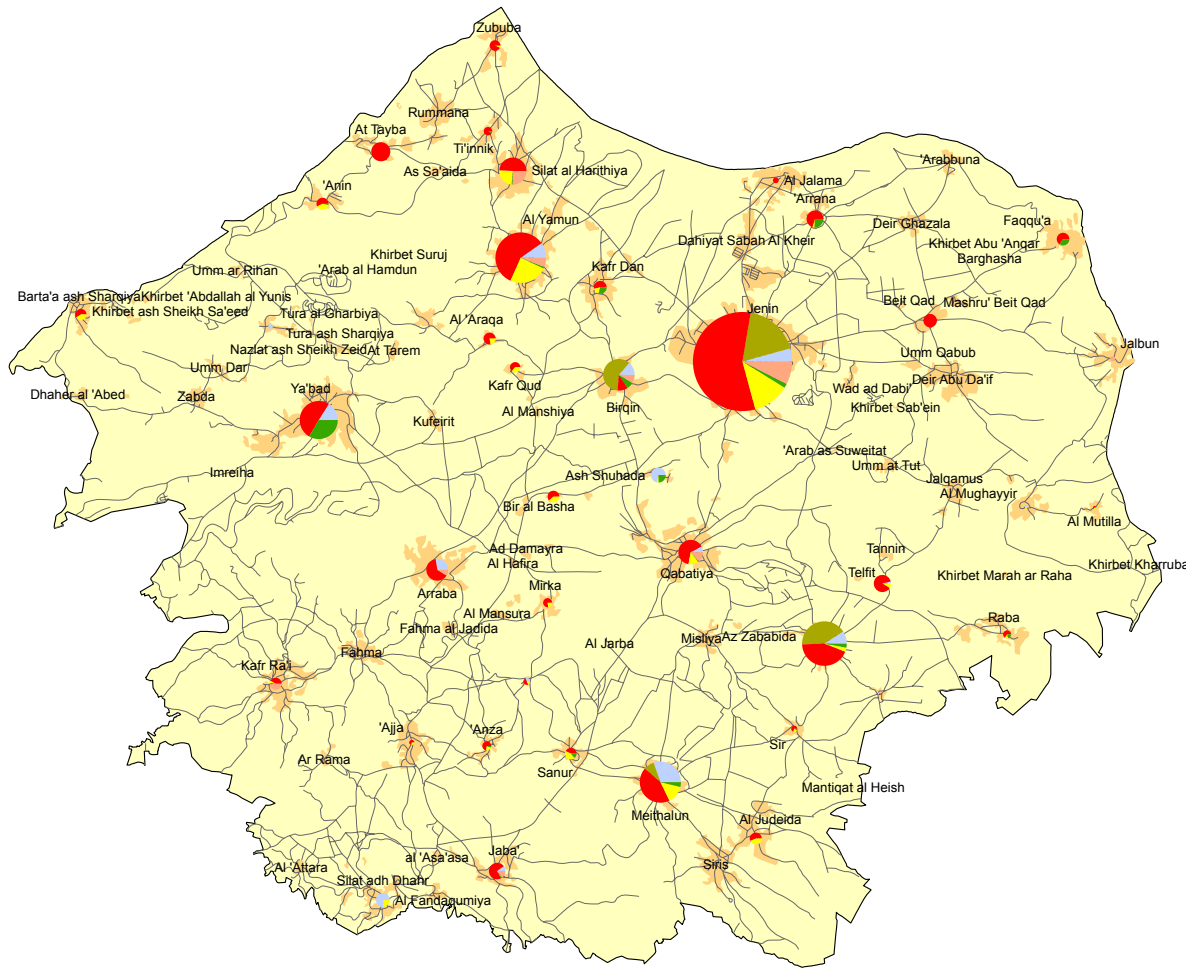
160,000 170,000 180,000 190,000



210,000

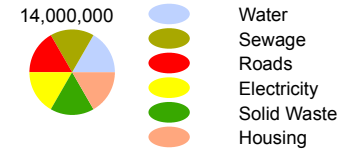
200,000

190,000



Estimated Cost per Sector (US\$) (Type I+II)

- Governorate Borders
- Built Areas
- Jenin Camp
- Roads



210,000

200,000

190,000

- Type I Projects resulting from damages directly caused by Israeli Forces
- Type II Projects NOT directly resulting from Israeli Forces caused damages (Rehabilitation and reconstruction (infrastructure), repair and replacement (equipment), new projects)

Base Data: PA MoPIC, July 2000
 Cartography: IMG - Updated March 2006
<http://www.ecwbg.info/>



160,000 170,000 180,000 190,000

DA/1/SECTOR/TI+II/01

