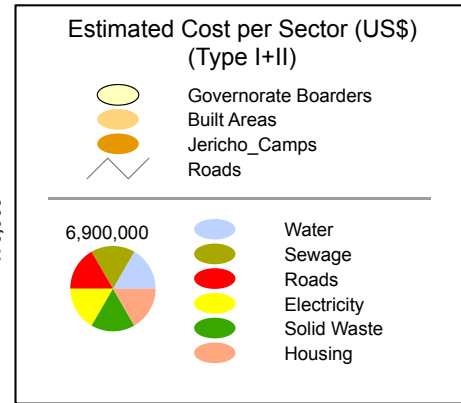
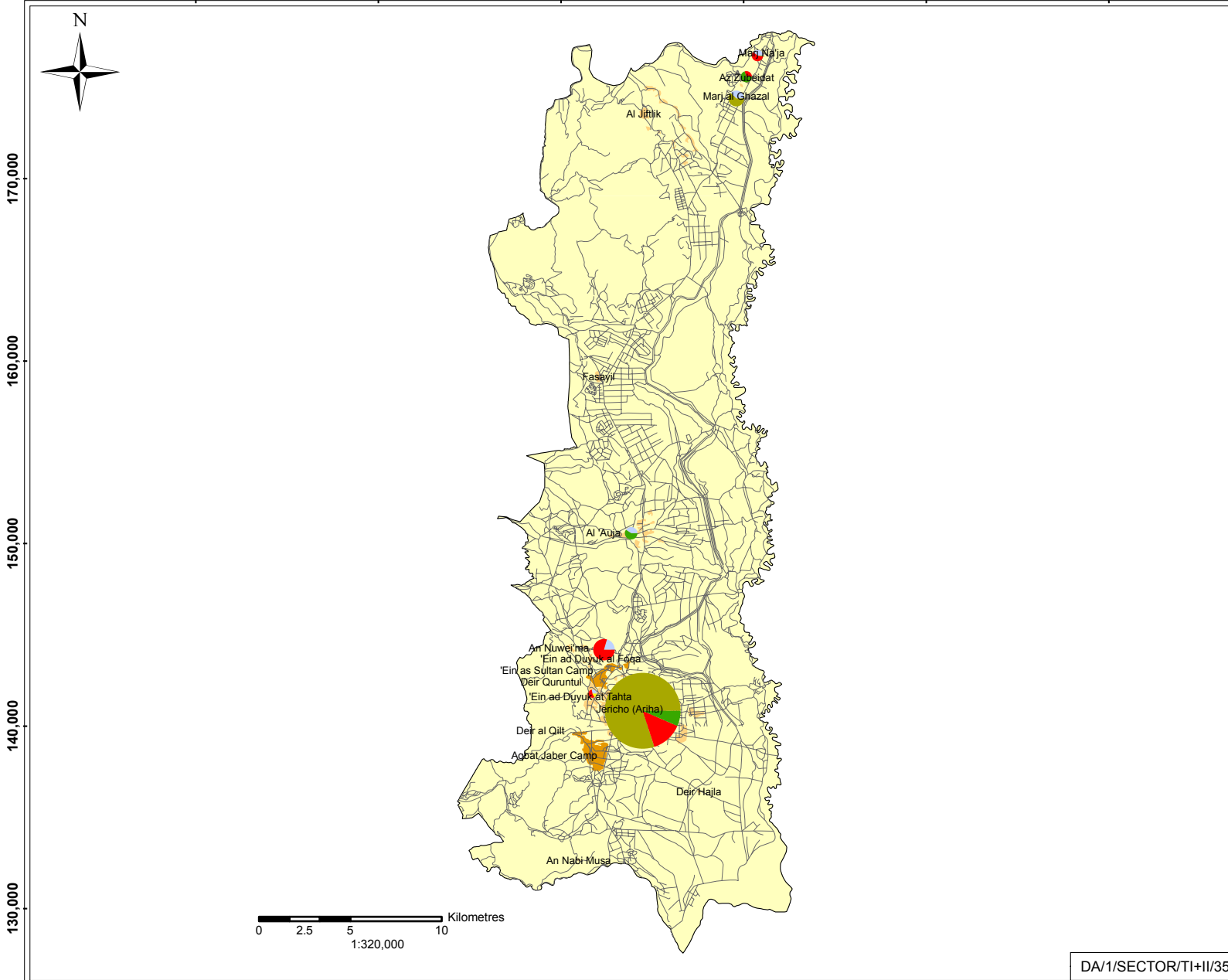


Estimated Cost per Sector (I+II)

JERICHO GOVERNORATE

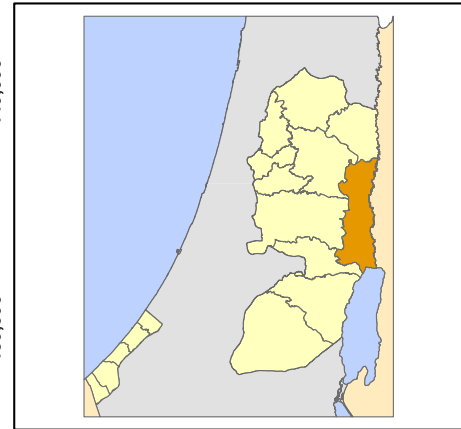
March 2006

170,000 180,000 190,000 200,000 210,000 220,000



Type I Projects resulting from damages directly caused by Israeli Forces
 Type II Projects NOT directly resulting from Israeli Forces caused damages (Rehabilitation and reconstruction (infrastructure), repair and replacement (equipment), new projects)

Base Data: PA MoPIC, July 2000
 Cartography: IMG - Updated March 2006
<http://www.ecwbg.info/>



DA/1/SECTOR/TI+II/35