

Estimated Cost per Sector (I+II)

NABLUS GOVERNORATE

March 2006

160,000 170,000 180,000 190,000 200,000

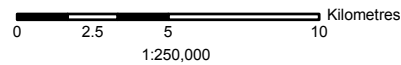
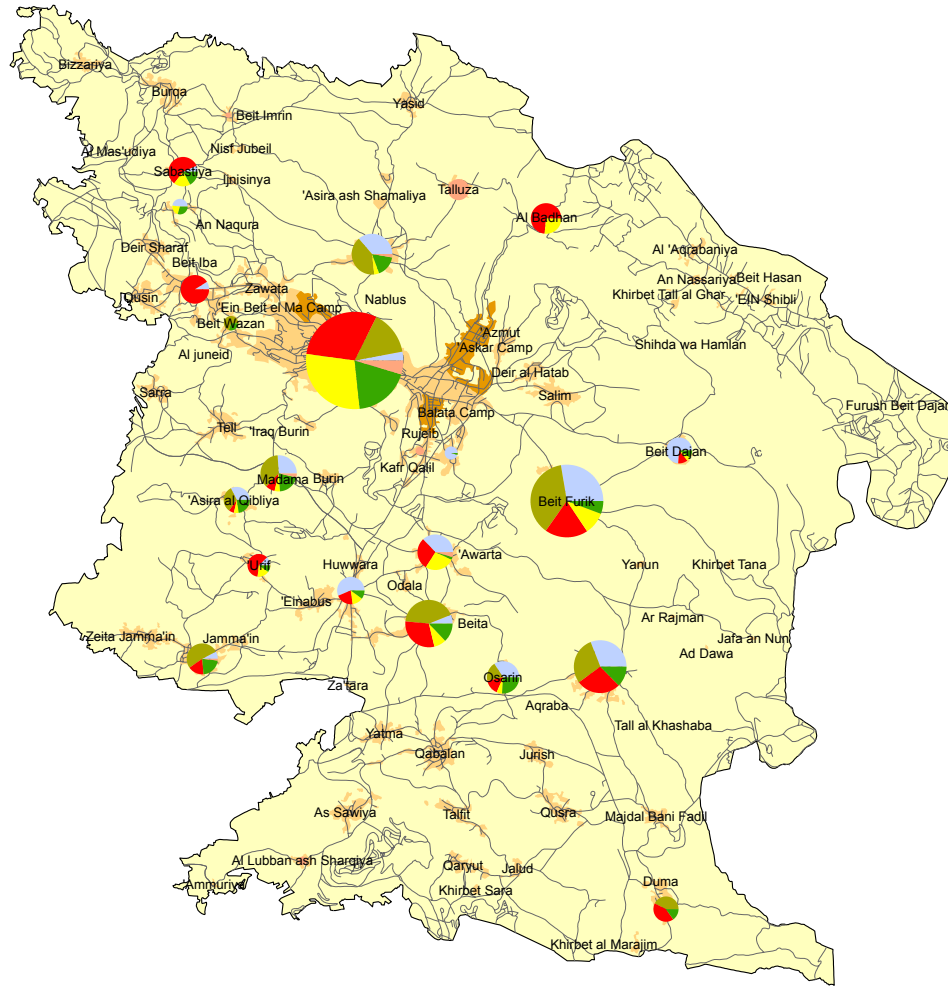


190,000

180,000

170,000

160,000



DA/1/SECTOR/TH+II/15

Estimated Cost per Sector (US\$) (Type I+II)

- Governorate Borders
- Built Areas
- Camps
- Roads

- 12,000,000
- Water
 - Sewage
 - Roads
 - Electricity
 - Solid Waste
 - Housing

- Type I Projects resulting from damages directly caused by Israeli Forces
- Type II Projects NOT directly resulting from Israeli Forces caused damages (Rehabilitation and reconstruction (infrastructure), repair and replacement (equipment), new projects)

Base Data: PA MoPIC, July 2000
 Cartography: IMG - Updated March 2006
<http://www.ecwbg.info/>

