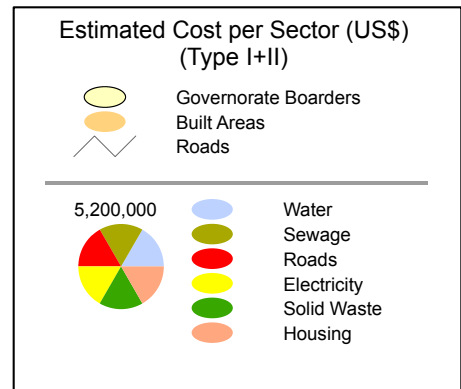
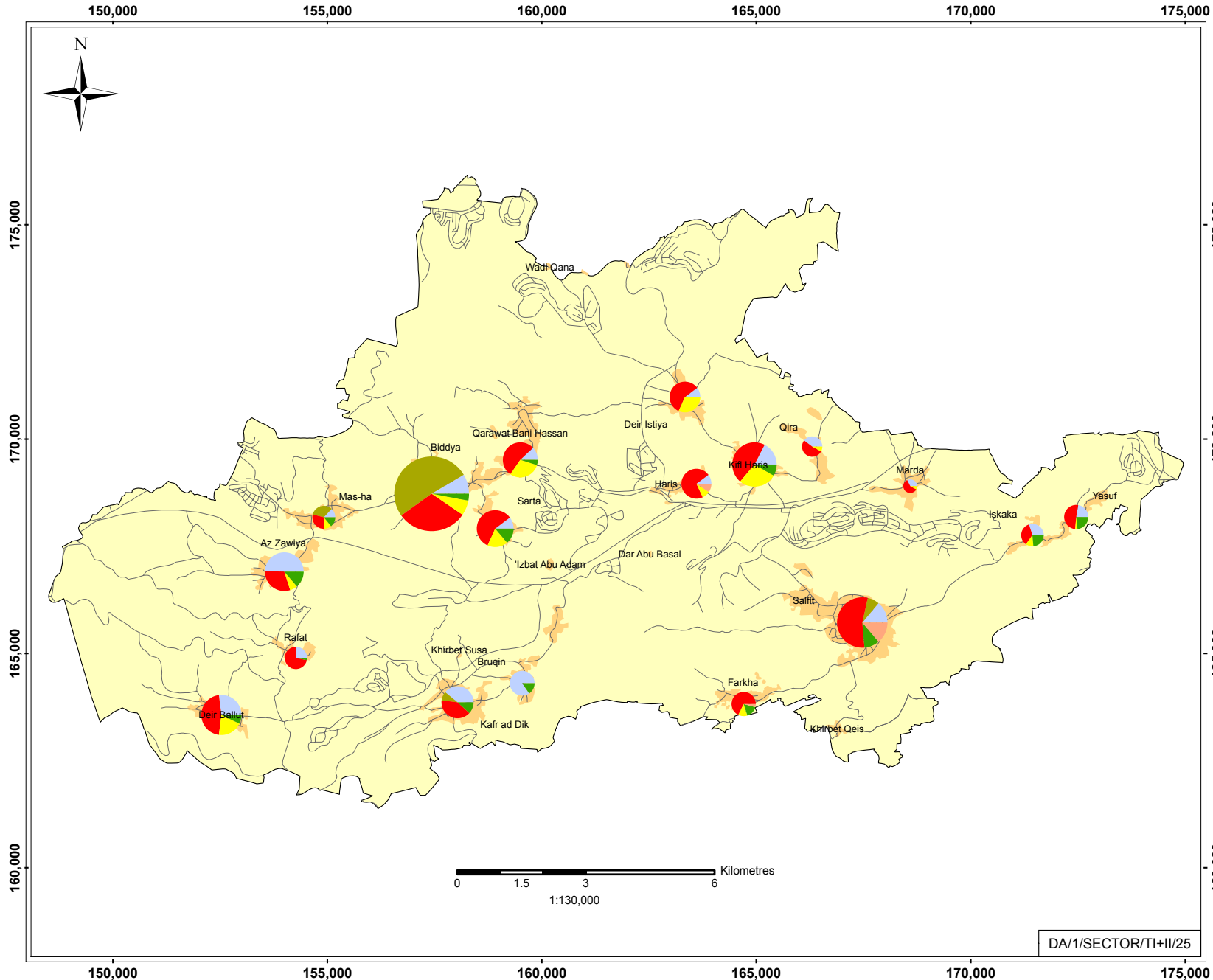


# Estimated Cost per Sector (I+II)

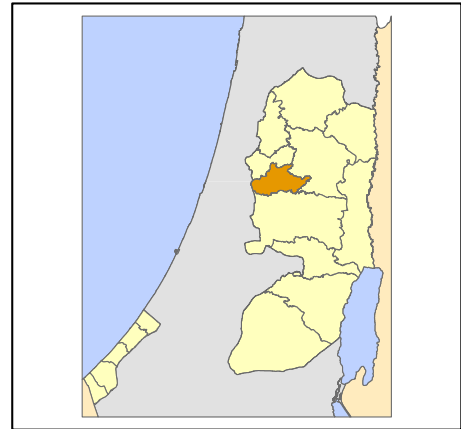
# SALFIT GOVERNORATE

March 2006



**Type I** Projects resulting from damages directly caused by Israeli Forces  
**Type II** Projects NOT directly resulting from Israeli Forces caused damages (Rehabilitation and reconstruction (infrastructure), repair and replacement (equipment), new projects)

Base Data: PA MoPIC, July 2000  
 Cartography: IMG - Updated March 2006  
<http://www.ecwbg.info/>



DA/1/SECTOR/TI+II/25