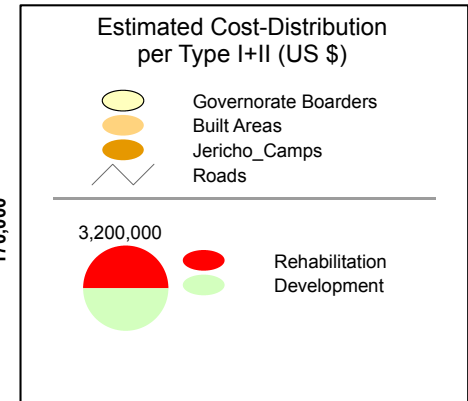
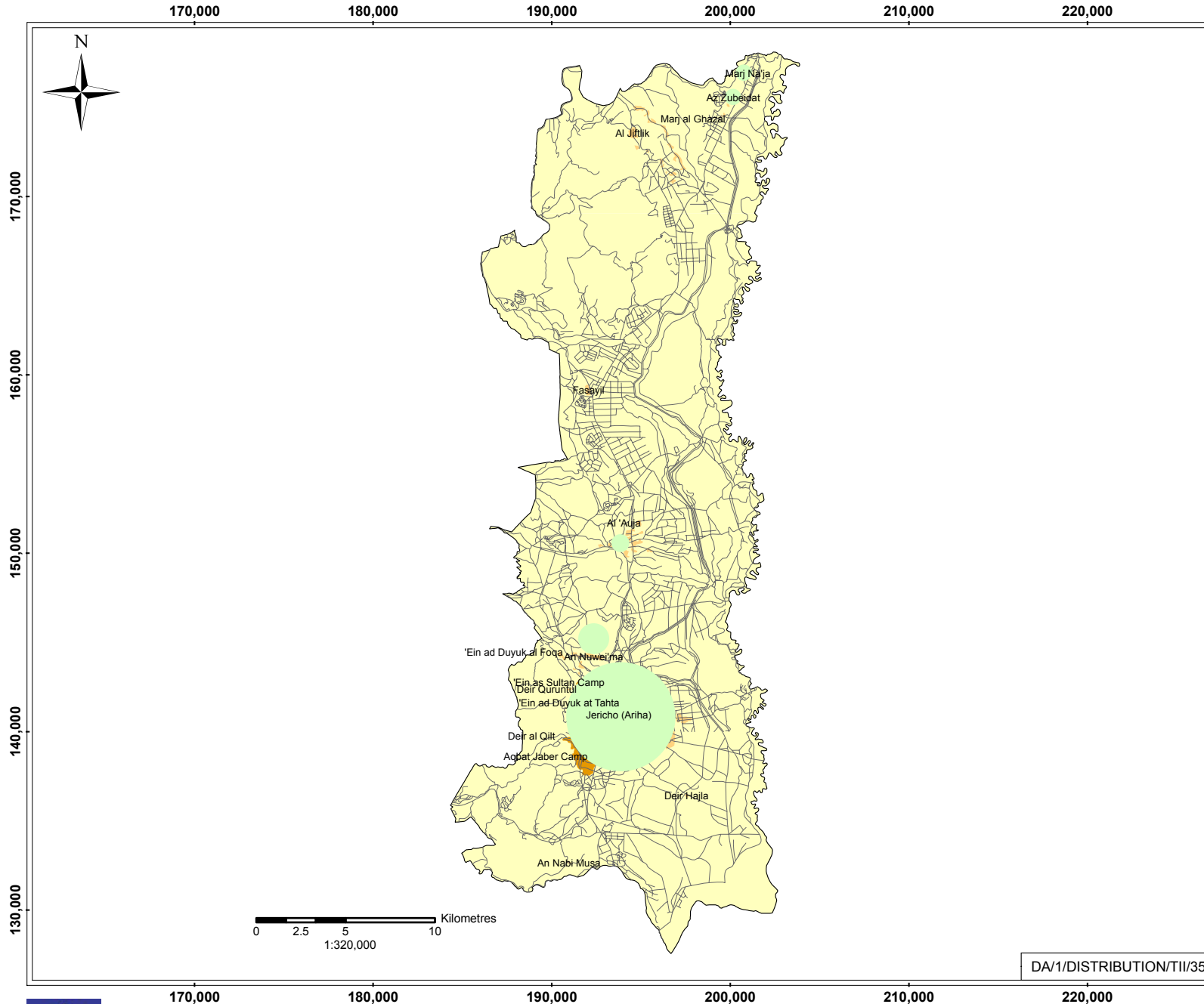


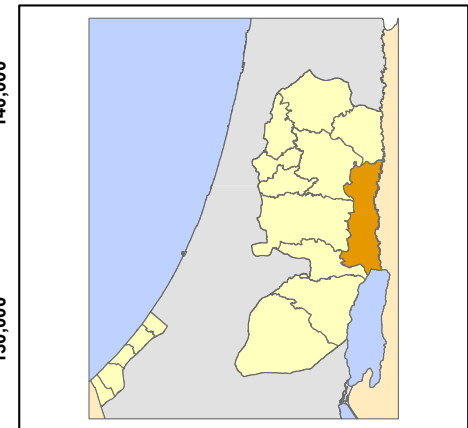
# Estimated Cost-Distribution per Type (I+II) JERICHO GOVERNORATE

March 2006



Type I Projects resulting from damages directly caused by Israeli Forces  
 Type II Projects NOT directly resulting from Israeli Forces caused damages (Rehabilitation and reconstruction (infrastructure), repair and replacement (equipment), new projects)

Base Data: PA MoPIC, July 2000  
 Cartography: IMG - Updated March 2006  
<http://www.ecwb.gov.info/>



This map is just illustrative and has no political implications whatsoever