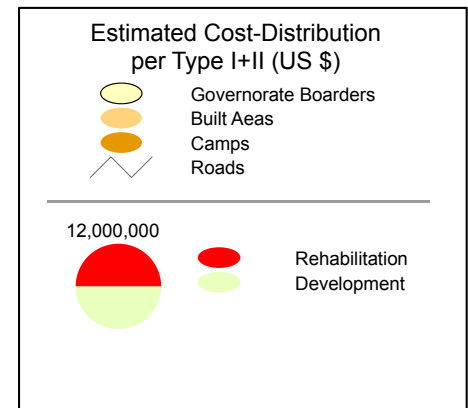
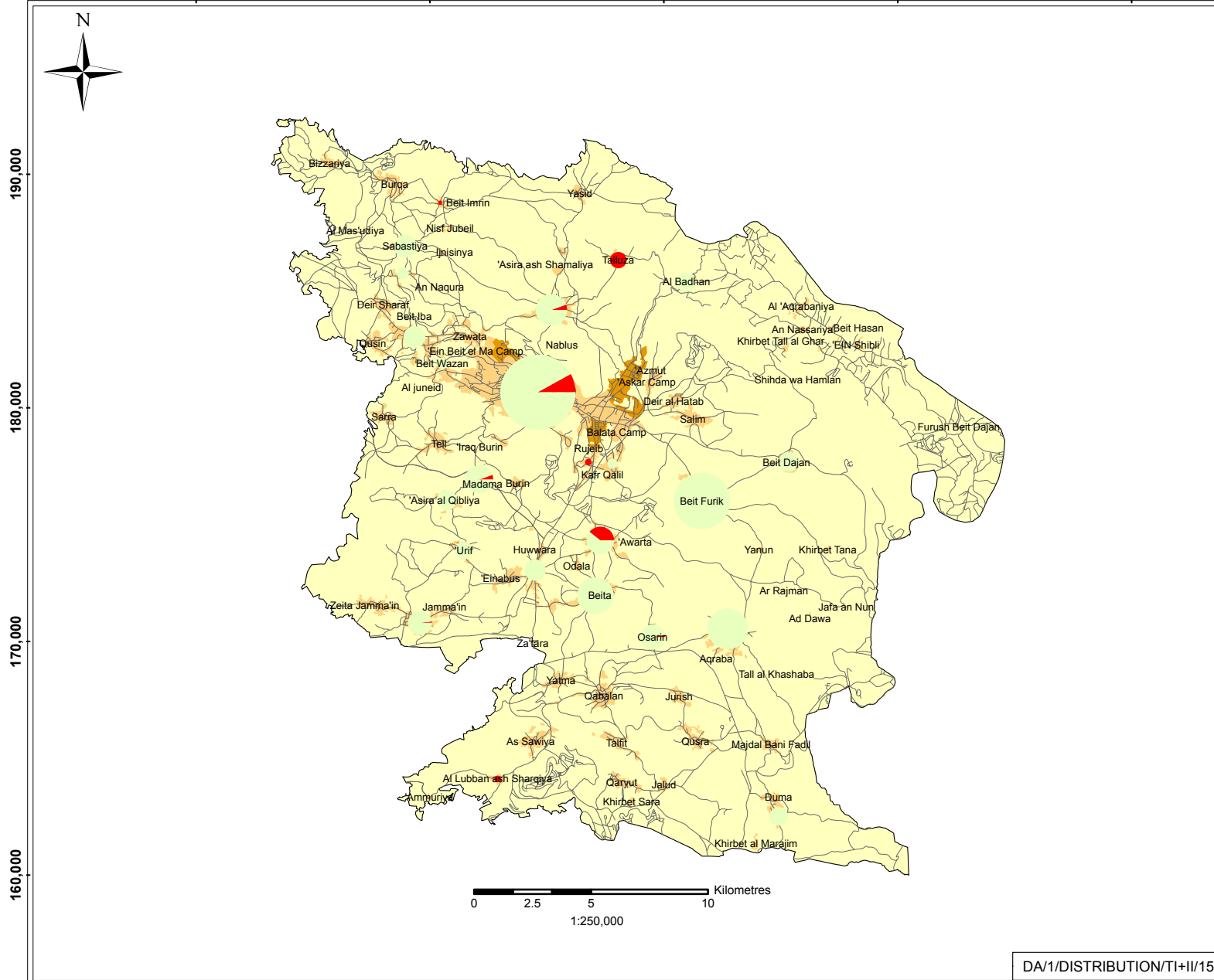


Estimated Cost-Distribution per Type (I+II) NABLUS GOVERNORATE

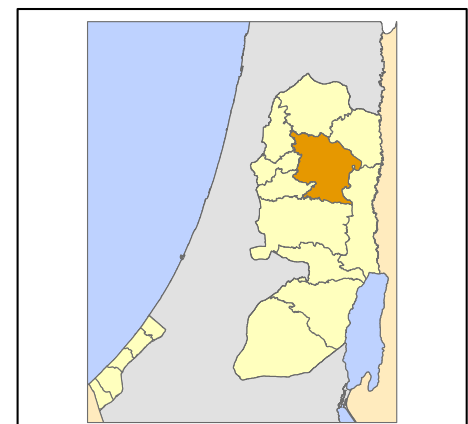
March 2006

160,000 170,000 180,000 190,000 200,000



Type I Projects resulting from damages directly caused by Israeli Forces
Type II Projects NOT directly resulting from Israeli Forces caused damages (Rehabilitation and reconstruction (infrastructure), repair and replacement (equipment), new projects)

Base Data: PA MoPIC, July 2000
 Cartography: IMG - Updated March 2006
<http://www.ecwbg.info/>



0 2.5 5 10 Kilometres
 1:250,000

DA/1/DISTRIBUTION/TH+II/15