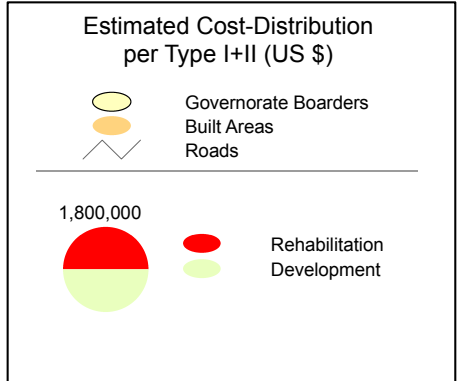
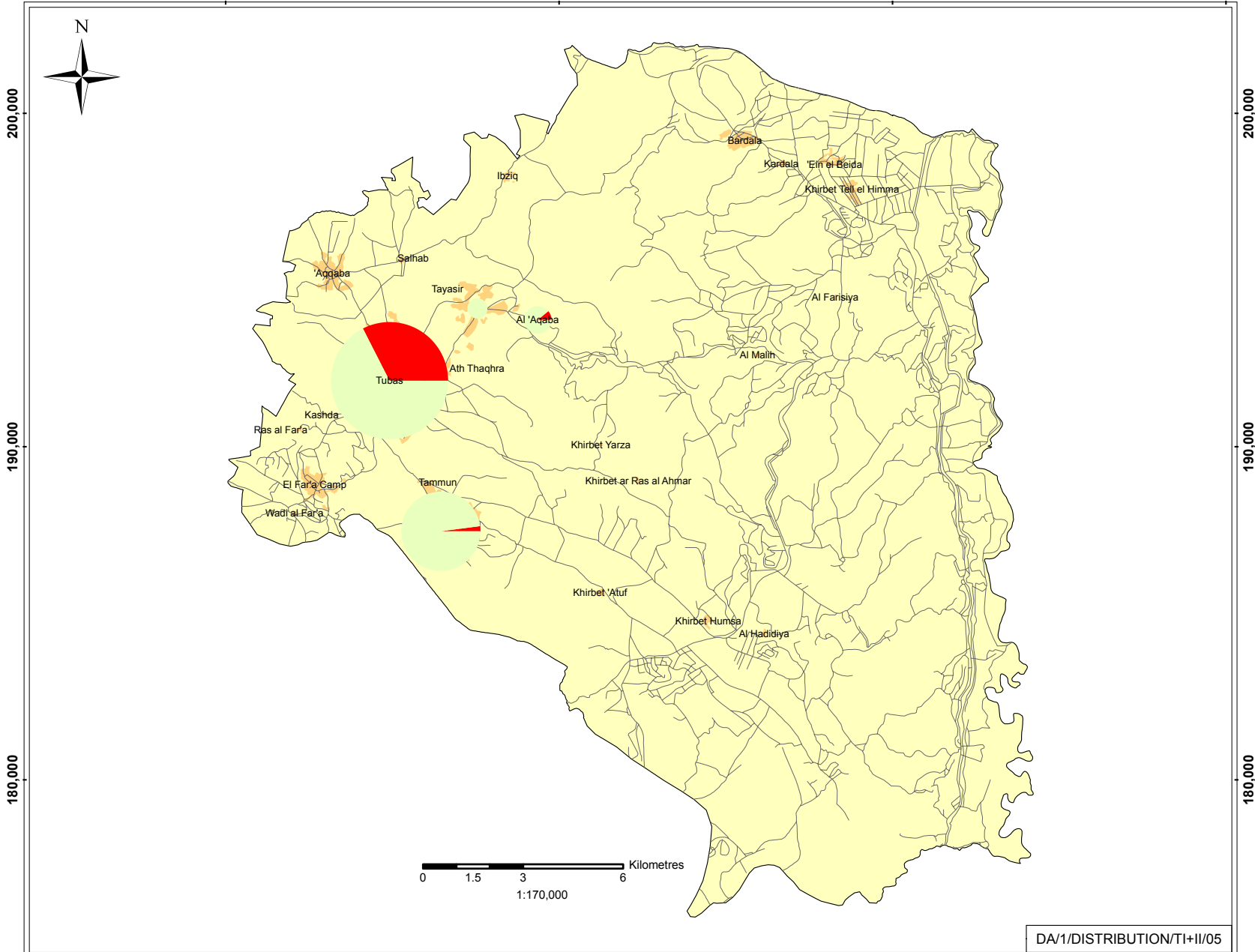


Estimated Cost-Distribution per Type (I+II)

TUBAS GOVERNORATE

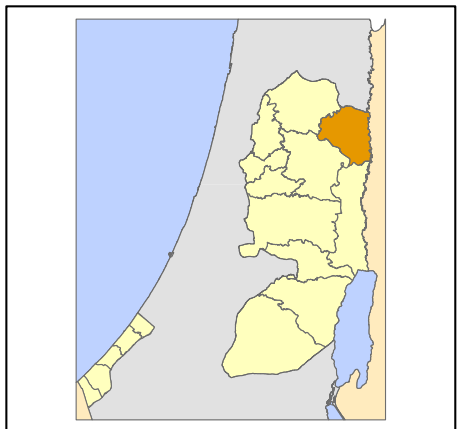
March 2006

180,000 190,000 200,000 210,000



Type I Projects resulting from damages directly caused by Israeli Forces
 Type II Projects NOT directly resulting from Israeli Forces caused damages (Rehabilitation and reconstruction (infrastructure), repair and replacement (equipment), new projects)

Base Data: PA MoPIC, July 2000
 Cartography: IMG - Updated March 2006
<http://www.ecwbgi.info/>



DA/1/DISTRIBUTION/TI+II/05

180,000 190,000 200,000 210,000